



**REGIONAL SPECIALISED METEOROLOGICAL CENTRE-TROPICAL CYCLONES, NEW DELHI
SPECIAL TROPICAL WEATHER OUTLOOK**

DEMS-RSMC SPECIAL TROPICAL CYCLONES NEW DELHI DATED 25.06.2023

SPECIAL TROPICAL WEATHER OUTLOOK FOR NORTH INDIAN OCEAN (THE BAY OF BENGAL AND THE ARABIAN SEA) VALID FOR NEXT 120 HOURS ISSUED AT 0600 UTC OF 25.06.2023 BASED ON 0300 UTC OF 25.06.2023.

BAY OF BENGAL:

UNDER THE INFLUENCE OF THE CYCLONIC CIRCULATION OVER NORTHWEST BAY OF BENGAL AND ADJOINING NORTH-ODISHA WEST BENGAL COASTS, A LOW PRESSURE AREA FORMED OVER THE SAME REGION AT 0000 UTC AND PERSISTED OVER THE SAME REGION AT 0300 UTC OF TODAY, THE 25TH JUNE, 2023. IT IS LIKELY TO MOVE NEARLY WEST-NORTHWESTWARDS DURING NEXT 3 DAYS.

SCATTERED TO BROKEN LOW AND MEDIUM CLOUDS WITH EMBEDDED INTENSE TO VERY INTENSE CONVECTION LAY OVER NORTH AND WESTCENTRAL BAY OF BENGAL AND ARAKAN COAST. SCATTERED LOW AND MEDIUM CLOUDS WITH EMBEDDED MODERATE TO INTENSE CONVECTION LAY OVER SOUTHWEST BAY OF BENGAL & GULF OF MARTABAN AND WEAK TO MODERATE CONVECTION LAY OVER ANDAMAN SEA.

PROBABILITY OF CYCLOGENESIS (FORMATION OF DEPRESSION) DURING NEXT 120 HRS:

24 HOURS	24-48 HOURS	48-72 HOURS	72-96 HOURS	96-120 HOURS
NIL	NIL	NIL	NIL	NIL

ARABIAN SEA:

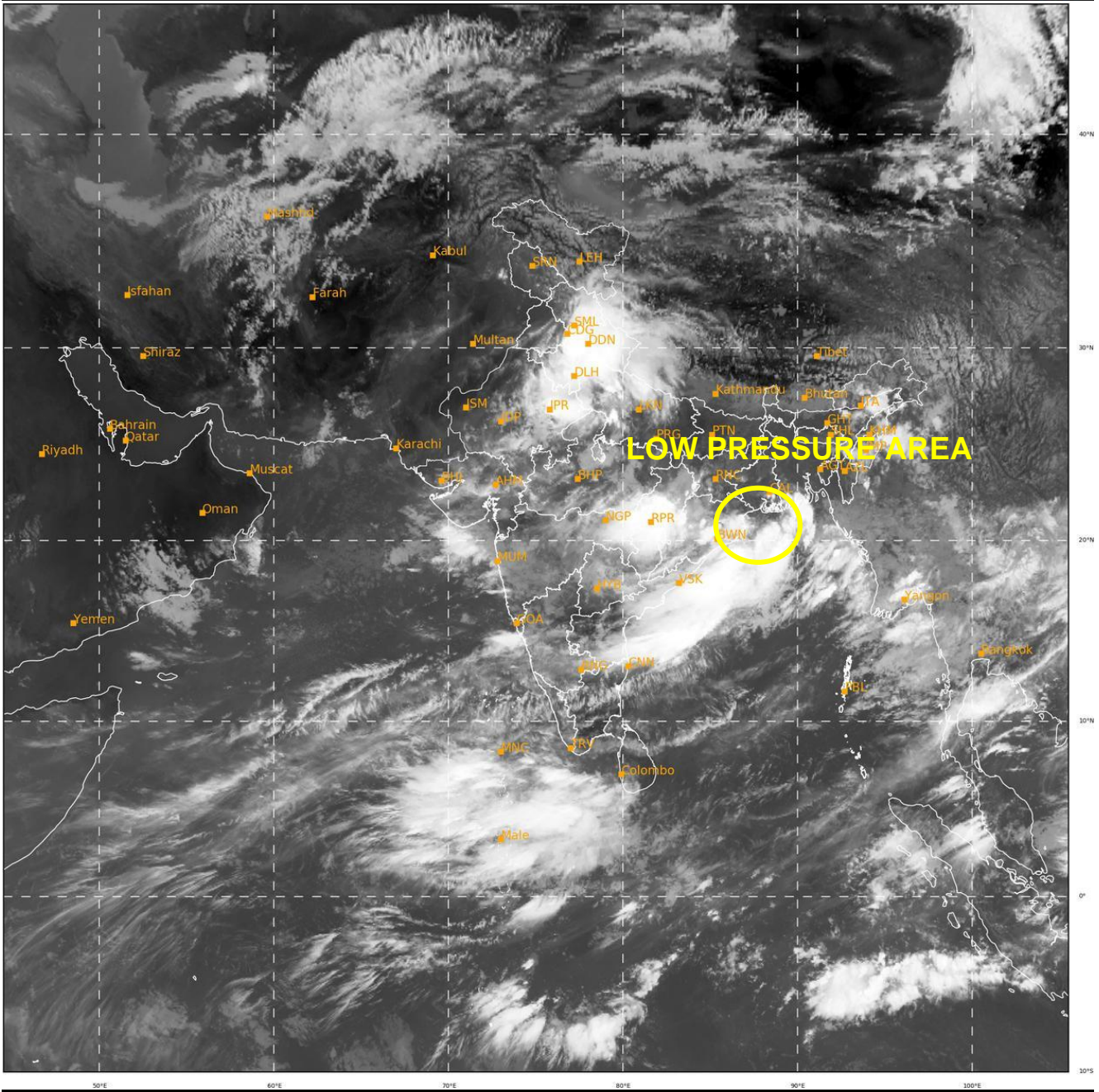
SCATTERED LOW AND MEDIUM CLOUDS WITH EMBEDDED INTENSE TO VERY INTENSE CONVECTION LAY OVER SOUTHEAST ARABIAN SEA, SOUTHERN PARTS OF COMORIN AREA AND ADJOINING EQUATORIAL INDIAN OCEAN. SCATTERED LOW AND MEDIUM CLOUDS WITH EMBEDDED MODERATE TO INTENSE CONVECTION LAY OVER NORTHEAST & EASTCENTRAL ARABIAN SEA & LAKSHADWEEP ISLANDS AREA. SCATTERED LOW AND MEDIUM CLOUDS WITH EMBEDDED WEAK TO MODERATE CONVECTION LAY OVER NORTHWEST & WESTCENTRAL ARABIAN SEA AND NORTHERN PARTS OF COMORIN AREA .

PROBABILITY OF CYCLOGENESIS (FORMATION OF DEPRESSION) DURING NEXT 120 HRS:

24 HOURS	24-48 HOURS	48-72 HOURS	72-96 HOURS	96-120 HOURS
NIL	NIL	NIL	NIL	NIL

REMARK:

VARIOUS MODELS INCLUDING IMD GFS, NCEP GFS, NCUM AND ECMWF ARE INDICATING NEARLY WEST-NORTHWESTWARDS MOVEMENT OF THE SYSTEM DURING NEXT 4-5 DAYS ACROSS INDIAN MAINLAND WITHOUT ANY FURTHER INTENSIFICATION.



322

924

IMD,DELHI

Cloud distribution: (a) Isolated: <25%, Scattered:25-50%, Broken: 51-75%, Solid:>75%, Convection Intensity: (a) Weak: Cloud Top Temperature (CTT) >-25°C, (b) Moderate: CTT: - 25°C to -40°C, (c) Intense: CTT: - 41°C to -70°C and (d) Very Intense: : Less than -70°C
PROBABILITY OF CYCLOGENESIS (FORMATION OF DEPRESSION):NIL: 0%, LOW: 1-33%, , MODERATE: 34-66% AND HIGH: 67-100%
This is a guidance Bulletin for WMO/ESCAP Panel Member countries. Visit respective National websites for Country specific Bulletins